



# OktaFlow<sup>®</sup> radial TK45

Multi-drop hot runner nozzle

radial version for side gating, with heated adapter

## TECHNICAL DATA

### 80HT

Melt channel Ød 7.5 mm

Operating voltage 230 V<sub>AC</sub> \*

Nominal length of the nozzle (L) in mm

60	90	130
■	■	■

### ORT45

Quantity of tips 1, 2, 4 or 8

Operating voltage 230 V<sub>AC</sub> \*

### AHJ8

Operating voltage 230 V<sub>AC</sub> \*

Adapter straight (G)/radius (R)/  
angle (W)

Contact us for other nozzle lengths!

\*Volts alternating current

■ available

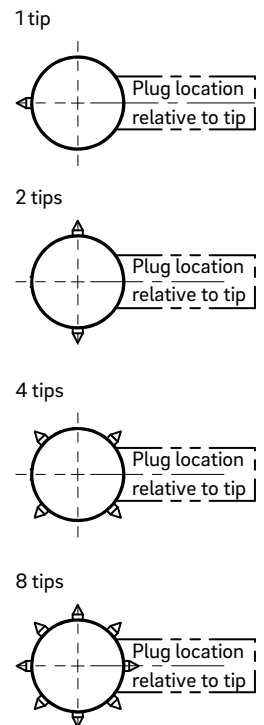
## NOTE

Power connector CMT and thermocouple connector CMLK are to be ordered separately.

WEBCODE  
41020

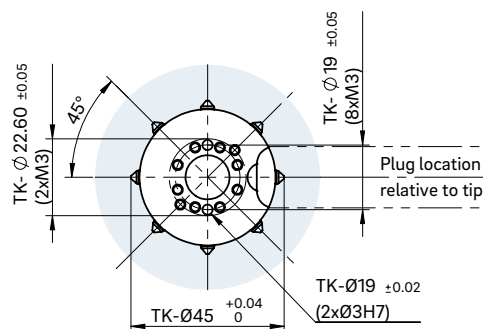


## PLUG LOCATION RELATIVE TO TIP



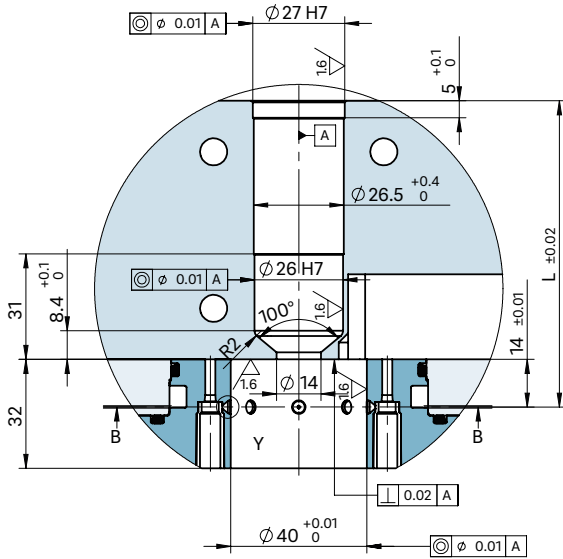
View B-B

Fastening screw thread and tip distance

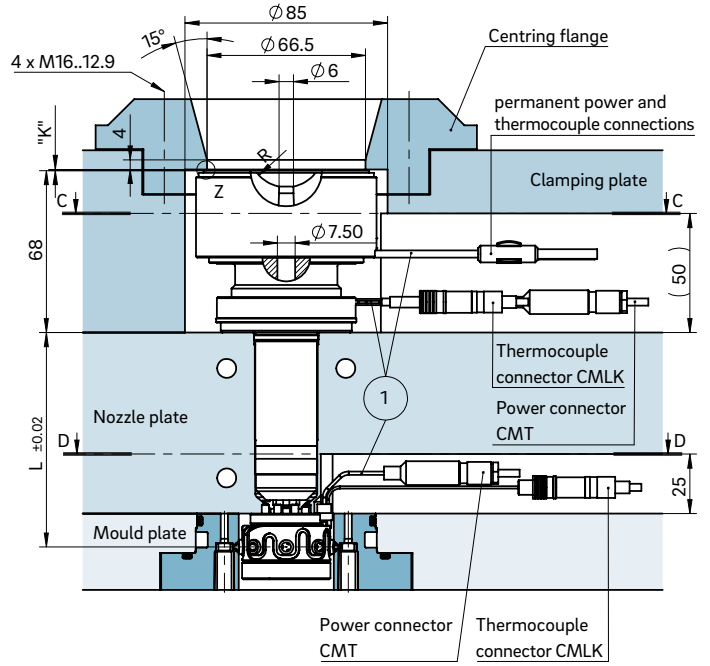
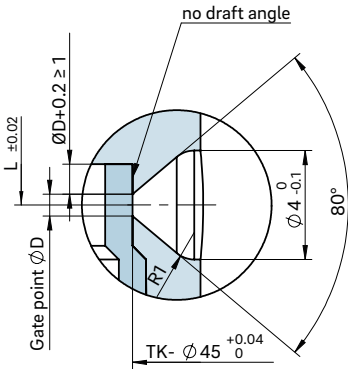




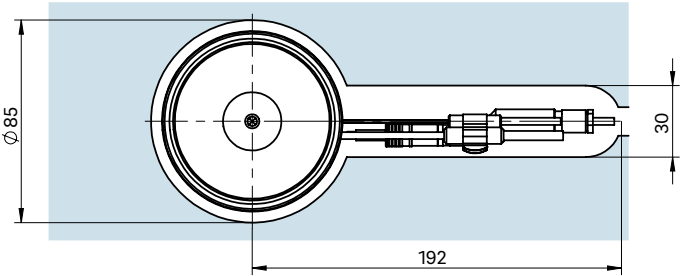
**INSTALLATION**



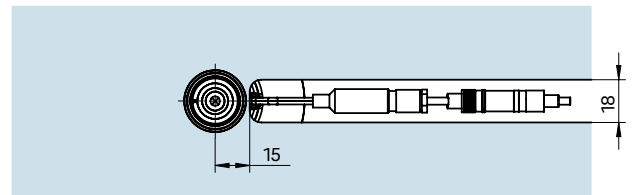
**Gate point geometry**



View C-C cutout for nozzle head, power and thermocouple plug connections



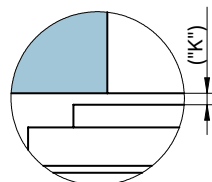
View D-D cutout for power and thermocouple plug connections of the sub-manifold



① Power and thermocouple plug connections in this area can only be bent once; minimum radius: R8

Dimension "K" required for heat expansion is to be ensured by grinding the location ring! Determine the difference between the height of the nozzle (with adapter) and the height of the structure when installed! ΔT specifies the temperature differential between the processing temperature and the mould temperature!

**Detail "Z"**



ΔT (°C)	100	150	200	250	300	350
K (mm)	0.04	0.08	0.12	0.16	0.20	0.25