



Hot runner nozzle type 3STF/3DTF

Open system nozzle with thick-film heating element (BlueFlow®), front-loading

TECHNICAL DATA

3STF/3DTF

Melt channel Ød	2.8 mm
Nozzle type	STF – open with tip DTF – open with straight outlet
Operating voltage	230 V _{AC} *

Nominal length of the nozzle (L) in mm

50	80	120
■	■	■

Contact us for other nozzle lengths!

*Volts alternating current

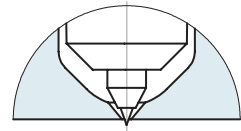
■ available

NOTE

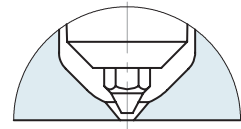
BlueFlow® hot runner nozzle type STF/DTF is not intended for sale or use in the USA or Canada!



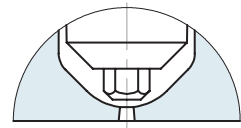
STF – open nozzle with tip version "Tip" Antechamber version A



DTF – open nozzle with straight outlet version C Antechamber version A



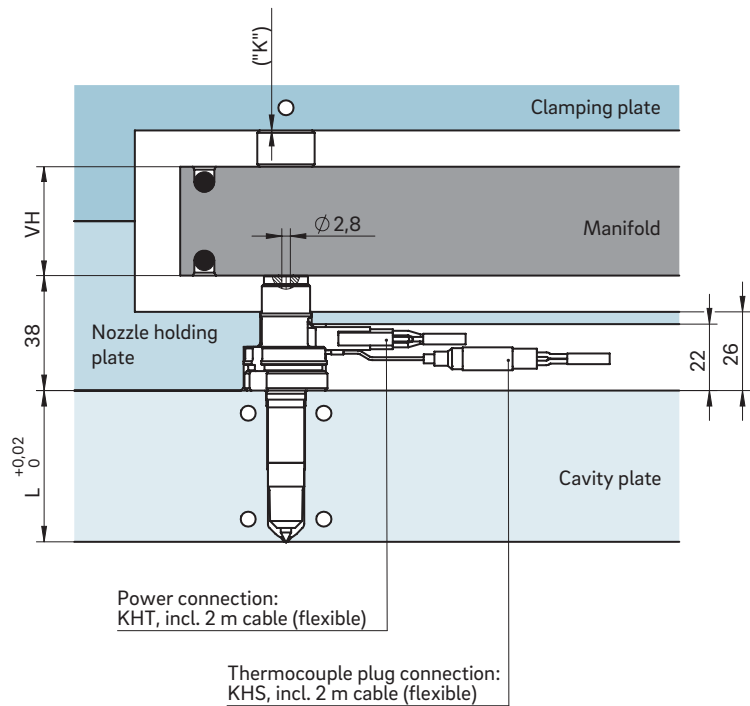
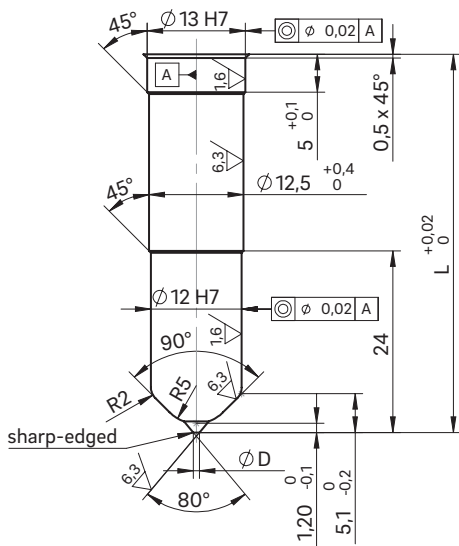
DTF – open nozzle with straight outlet version A Antechamber version C



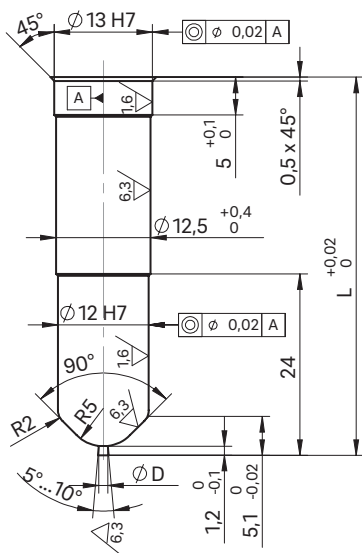


INSTALLATION

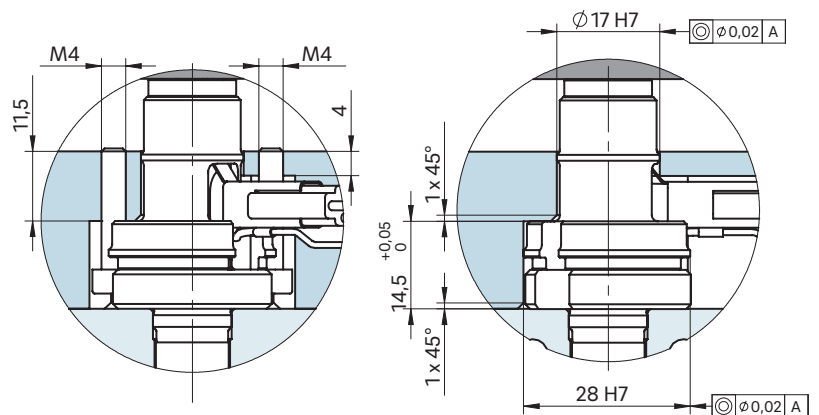
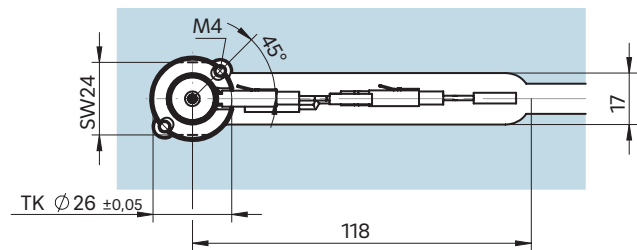
Open nozzle with tip
Nozzle type version C
Antechamber version A



Open nozzle with tip
Nozzle type version C
Antechamber version A



Example cutout for nozzle head, power and thermocouple plug connections



Dimension "K" required for heat expansion is to be ensured by grinding the pressure pad (12 ± 0.1 mm)! Determine the difference between the height of the manifold system and the height of the clamping plate when installed! ΔT specifies the temperature differential between the processing temperature and the mould temperature!

VH	ΔT (°C)	100	150	200	250	300	350
36 mm	K (mm)	0.021	0.059	0.098	0.137	0.177	0.217
46 mm	K (mm)	0.033	0.078	0.124	0.170	0.218	0.264
56 mm	K (mm)	0.046	0.097	0.150	0.203	0.258	0.311

SW = flat area on nozzle head