



Hot runner nozzle type 10SHT/10DHT

Open system nozzle with conventional heating element, screwed to the manifold

TECHNICAL DATA

10SHT/10DHT

| | |
|--------------------------|--|
| Melt channel Ød | 10.0 mm |
| Nozzle type | SHT – open with tip DHT – open with straight outlet |
| Operating voltage | 230 V _{AC} * |

Nominal length of the nozzle (L) in mm

| | | | | | | |
|----|----|-----|-----|-----|-----|-----|
| 60 | 80 | 100 | 120 | 150 | 200 | 250 |
| ■ | ■ | ■ | ■ | ■ | □ | □ |

Contact us for other nozzle lengths!

*Volts alternating current

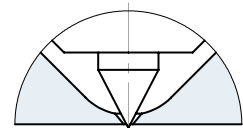
■ available □ on request

NOTE

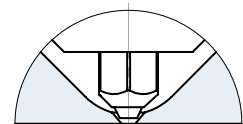
Power connector CMT and thermocouple connector CMLK are to be ordered separately.



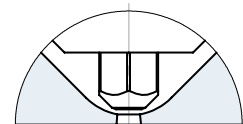
SHT – open nozzle with tip version "Tip" Antechamber version A



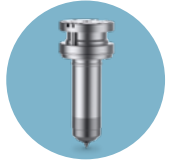
DHT – open nozzle with straight outlet version C Antechamber version A



DHT – open nozzle with straight outlet version A Antechamber version C

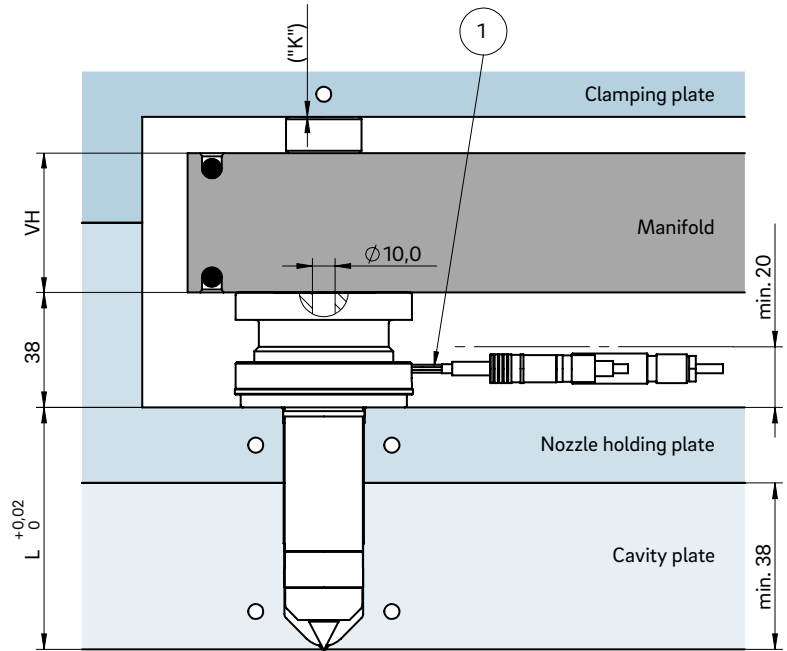
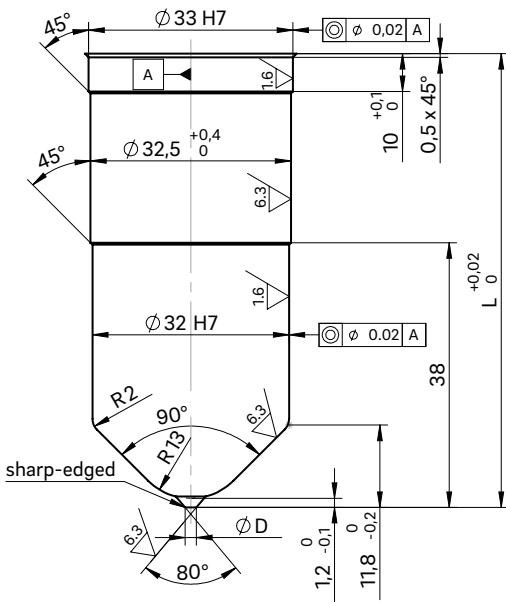


WEBCODE
22070



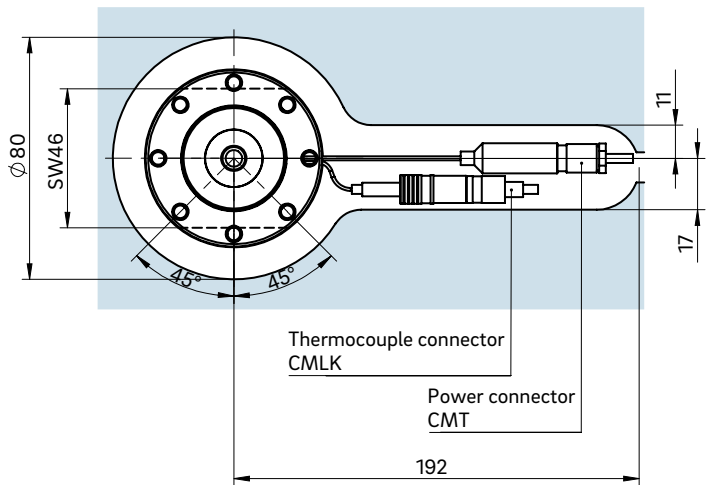
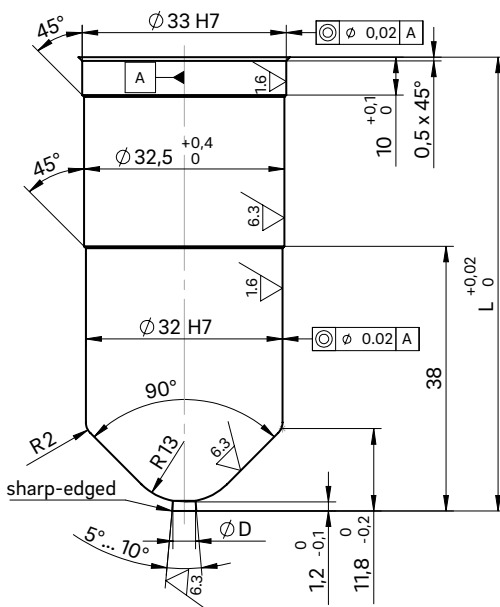
INSTALLATION

Open nozzle with tip
Nozzle type version C
Antechamber version A



Example cutout for nozzle head, power and thermocouple plug connections

Open nozzle with straight outlet
Nozzle type version A
Antechamber version C



- ① Power and thermocouple plug connections in this area can only be bent once; minimum radius: R8
SW = flat area on nozzle head

Dimension "K" required for heat expansion is to be ensured by grinding the pressure pad (12 + 0.1 mm)! Determine the difference between the height of the manifold system and the height of the clamping plate when installed! ΔT specifies the temperature differential between the processing temperature and the mould temperature!

| VH | ΔT (°C) | 100 | 150 | 200 | 250 | 300 | 350 |
|-------|---------|-------|-------|-------|-------|-------|-------|
| 36 mm | K (mm) | 0.021 | 0.059 | 0.098 | 0.137 | 0.177 | 0.217 |
| 46 mm | K (mm) | 0.033 | 0.078 | 0.124 | 0.170 | 0.218 | 0.264 |
| 56 mm | K (mm) | 0.046 | 0.097 | 0.150 | 0.203 | 0.258 | 0.311 |