



Gate bushing type LD

Version LD with extended length

TECHNICAL DATA

Dimensions

	Version (mm)						R
	ØA	ØS	ØT ₁	s	u	ØA ₁	
18LD	38	18	26	5	6	39 ¹	8

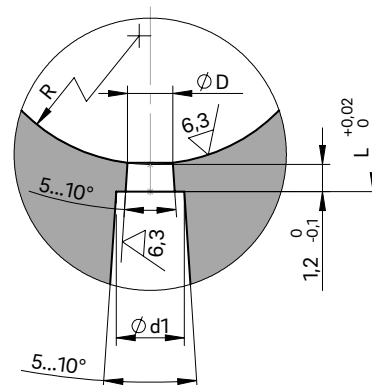
¹ØA₁ = 43 mm with nozzle type 5DEF

NOTE

After eroding the gate bushing, it must be annealed to remove stress (1 hour at 470 °C).



ANTECHAMBER VERSIONS C AND D



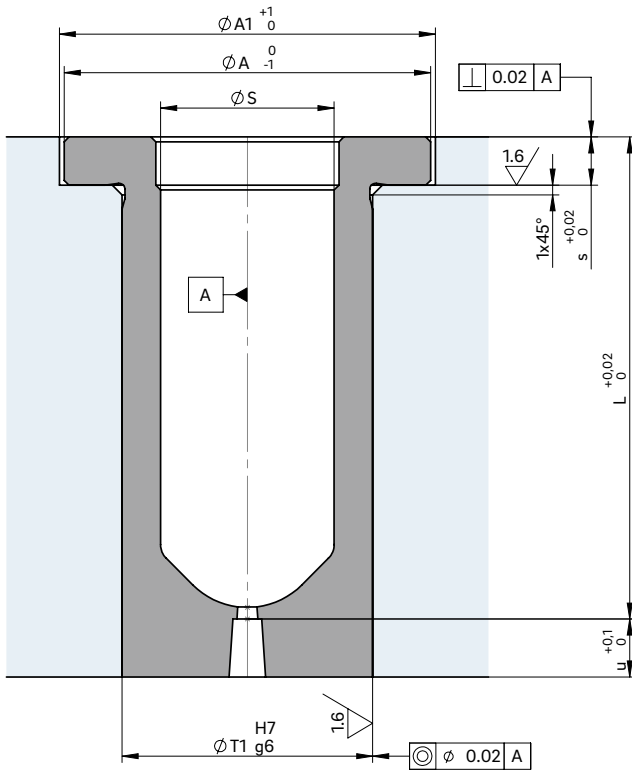
Ød1 0.5 mm larger than ØD

For open nozzles with a straight outlet
for antechamber version C and D and
nozzle piece A

WEBCODE
23040



GATE BUSHING INSTALLATION



For gate bushings with an extended length, the gate contour goes through dimension "L"

Nozzle type designation	Gate bushing type/length (mm)			
	50	60	80	100
5DEF	■ 18LD	■ 18LD	■ 18LD	
5DHF	■ 18LD	■ 18LD	■ 18LD	■ 18LD
5DTT	■ 18LD	■ 18LD	■ 18LD	■ 18LD

■ available