



3SGT 1-drop

Multi-drop hot runner nozzle for minimal cavity distances,
with heated adapter

TECHNICAL DATA

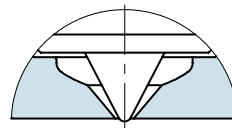
3SGT 1-drop

Melt channel Ød	3 mm
Adapter	straight (G)/radius (R)/ angle (W)
Operating voltage	230 V _{AC} *
Nominal length of the nozzle (L):	20 mm

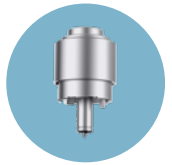
*Volts alternating current



Version "Tip"
Antechamber version A

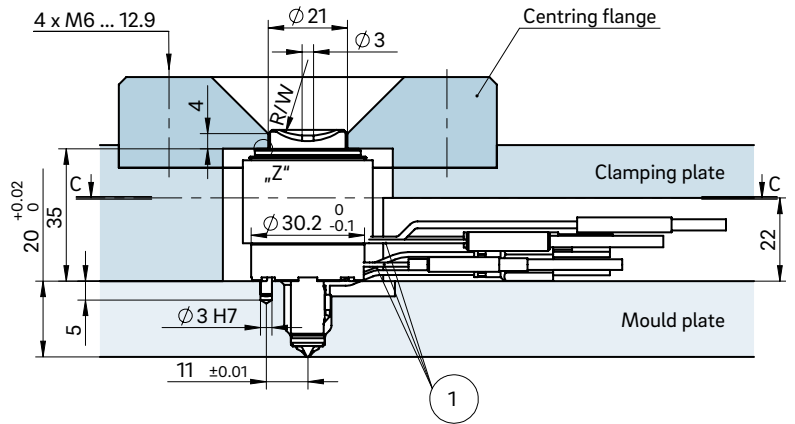
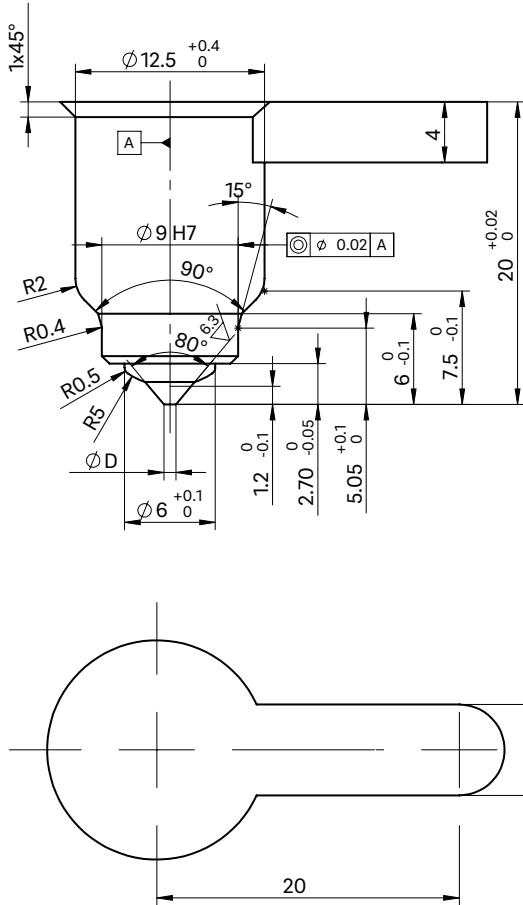


WEBCODE
41080

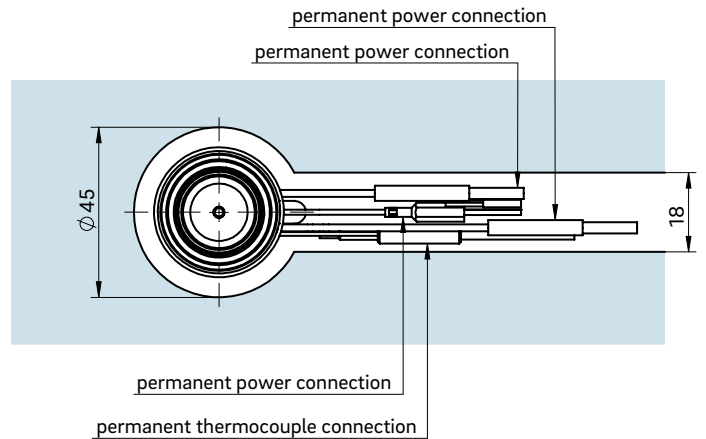


INSTALLATION

Open nozzle with tip
Nozzle type version C
Antechamber version A



Cross-section C-C: Cutout for nozzle head, power and thermocouple plug connections



① Power and thermocouple plug connections in this area can only be bent once; minimum radius: R8

Dimension "K" required for heat expansion is to be ensured by grinding the location ring! Determine the difference between the height of the nozzle (with adapter) and the height of the structure when installed! ΔT specifies the temperature differential between the processing temperature and the mould temperature!

ΔT (°C)	100	150	200	250	300	350
K (mm)	0.02	0.03	0.04	0.06	0.07	0.08

Detail "Z"

